

November
2024

MEMO

MID-EDEN MAGAZINE
www.midedenmemo.org.uk

Community
Events,
Trades &
Services
In

Blencarn
Culgaith
Edenhall
Gamblesby
Glassonby
Hunsonby
Kirkland
Langwathby
Little Salkeld
Melmerby
Ousby
Skirwith
Winskill

THE NEXT "MEMO" MAY SADLY BE THE LAST



VOLUNTEERS VERY URGENTLY NEEDED

Sponsored by

Langwathby Stores & Post Office.
The VIC, Culgaith.
Tithe Cottage Furnishings.
Parish Councils: Culgaith, Hunsonby, Langwathby
PCC of Langwathby
Langwathby Methodist Chapel
Penrith Building Society

SEE PAGE 3 FOR MORE
INFORMATION ON OUR
PRECARIOUS POSITION &
HOW YOU CAN HELP

MidEdenMemo 

Dear Friends,

I suspect that some of us grow the herb "rosemary" – it does, after all, have a variety of culinary uses! Rosemary is, however, a symbol of remembrance. It is evergreen, just as our memories stay with us year after year, and it has a strong, bitter-sweet taste and smell, like our memories of those we have loved and lost can be vivid and bitter-sweet, causing us to both smile and weep.

November is a season of remembrance. At the start of the month we celebrate All Saints, closely followed by All Souls. Then, a week later, we mark Remembrance Day when we remember those lost in both World Wars and more recent conflicts.

Memory is important. It doesn't just connect us with the past, but also with the future as we seek to become the living testimony of those we remember. Certainly, the Christian faith has a strong tradition of remembering. As Jesus approached his own death, he shared a simple meal with his friends. He urged them to remember him every time they broke bread or drank wine together.

The clocks have gone back and our hours of daylight are getting shorter and more gloomy. Yet there is still autumn colour and many birds will have arrived here to overwinter. Their memories, or "avian sat-nav" often bring them back to where they had previously spent the winter and found food and shelter. Similarly, our churches are places where we can return to worship God and to remember with thankfulness all those people and events who have given us hope and light.

Julie Barrett.
Lay Reader.

EAST OF EDEN MISSION COMMUNITY CONTACT DETAILS

Please visit our website for news and details of all services:
www.eastofedenmc.org.uk

Rev Dave Milner: Mission Community Leader and Jt Methodist Superintendent
T: 01768 863209 E: dave@revmilner.plus.com

Rev Fiona Jenkins: retired priest for baptism, wedding and funeral enquiries
T: 07725 404668 E: revfionalazenby@icloud.com

Canon Bryan Gray: Lay Chair of Mission Community for other enquiries
T: 07802 950222 E: bryangray@bryangray.co.uk

DATES FOR YOUR DIARY

NOVEMBER

3rd	Little Acorns Celebration, Gamblesby Methodist Chapel (p10)	12.00 noon
5th	He Brews Coffee Club, Gamblesby Methodist Chapel (p10)	10.00am-12.00pm
6th	Whist Drive, Kirkland & Blencarn Village Hall (p11)	7.00pm
6th	Langwathby & Edenhall WI, Langwathby Village Hall (p4)	7.30pm
7th	Meeting Point, Langwathby Methodist Church (p9)	10.15am
7th	VIC Café, Culgaith Village Hall (p8)	2.00-4.00pm
8th	Christmas Shopping Night, Langwathby Village Hall (p12)	7.00pm
9th	Live Music, Eden Valley Network, Langwathby Village Hall (p11)	7.00pm
10th	Community Remembrance Service, Gamblesby (p10)	2.00pm
10th	Quiz Night @ The Shepherds Inn, Langwathby (p9)	7.00-9.00pm
12th	He Brews Coffee Club, Gamblesby Methodist Chapel (p10)	10.00am-12.00pm
12th	Soup & Cake lunches, Skirwith Village Hall (p4)	12.00-13.00pm
13th	Coffee & Chat, Hunsonby Community Centre	10.30am
13th	Annual General Meeting, Culgaith Village Hall (p6)	7.00pm
13th	Nobody's Friends Shanty Group, Melmerby Village Hall	7.30pm
14th	VIC Café, Culgaith Village Hall (p8)	2.00-4.00pm
15th	Family Bingo, Culgaith Village Hall (p6)	6.00pm
15th	Quiz Night with the WI, Langwathby Village Hall (p5)	7.00pm
16th	'Pop up Shop', Eden Animal Rescue, Langwathby VH (p7)	10.30am-3.00pm
16th	Christmas Craft Fair, Kirkland & Blencarn Village Hall (p11)	10.30am-12.30pm
16th	The Bookshop Band, Melmerby Village Hall (p5)	7.30pm
19th	He Brews Coffee Club, Gamblesby Methodist Chapel (p10)	10.00am-12.00pm
19th	MDGC Dahlias for the garden, Melmerby Village Hall (p5)	7.30pm
20th	Craft afternoon, Langwathby Chapel (p10)	2.00pm
20th	Whist Drive, Kirkland & Blencarn Village Hall (p11)	7.00pm
21st	"Oasis", Langwathby Methodist Chapel (p9)	10.30am
21st	VIC Café, Culgaith Village Hall (p8)	2.00-4.00pm
22nd	Talk 'Carlisle's Turkish Baths, Kirkland & Blencarn VH (p11)	7.30pm
23rd	80's Disco, Langwathby Village Hall—Cancelled (p11)	
23rd	Bring and Buy—Culgaith Village Hall (p6)	10.00am-Noon
24th	Film Night, Chinatown, Skirwith Village Hall (p4)	4.30pm
26th	He Brews Coffee Club, Gamblesby Methodist Chapel (p10)	10.00am-12.00pm
28th	VIC Café, Culgaith Village Hall (p8)	2.00-4.00pm
29th	Film Night: The Holdovers, Gamblesby Community Centre (p9)	7.00 pm
29th	Highlights presents Maddie Morris, Skirwith VH (p4)	7.30pm

DECEMBER

3rd	MDGC Christmas Meal, Melmerby (p5)	12.00pm
8th	Quiz Night @ The Shepherds Inn, Langwathby (p9)	7.00-9.00pm
10th	Soup & Cake lunches, Skirwith Village Hall (p4)	12.00-13.00pm
11th	Coffee & Chat, Hunsonby Community Centre	10.30am
14th	Eden Valley Touring Network, Langwathby VH (p11)	T.B.A.
15th	Film Night The Grand Budapest Hotel, Skirwith VH (p4)	4.30pm
20th	Live Music, Eden Valley Network, Langwathby Village Hall	7.00pm

JANUARY 2025

4th	Talk 'Menopause Myths', Culgaith Village Hall (p6)	4.00-5.00pm
11th	Live Music, Eden Valley Network, Langwathby Village Hall (p11)	7.00pm
18th	New Year Ceilidh, Culgaith Village Hall (p6)	7.00pm
25th	Traditional Burns Night Supper, Langwathby Village Hall (p11)	T.B.A.

Langwathby Parish Council

Thursday 26th September 2024 at 7.30 pm in Langwathby Village Hall

Present – 6 Councillors, WAFC Cllrs M Hanley and M Robinson, and 3 members of the public.

The following key issues were discussed: -

- **Finance**
- **Eden Straights Traffic Incident** – Report tabled from Highways.
- **Salkeld Road, Langwathby** – Speeding concerns – To raise with Highways.
- **Maypole Gardens** – Traffic speed report tabled from Highways.
- **Maypole Gardens Junction by Recycling Centre** – Traffic concerns to raise with Highways.
- **Langwathby Public Hall Renovation** – Discussed.
- **Langwathby Playground** – New initiative to renovate was welcomed.
- **Back Lane Light by Coxen Lane – Langwathby** – Now working at last!!
- **Edenhall Road Drainage Issue by Sports Field Entrance** - Highways reported that a new drain to be designed and installed in an attempt to resolve the issue.
- **Langwathby Notice Board Replacement** – Now Installed.
- **Entrance to Low Mill, Langwathby** – Give Way Sign and road markings requested.
- **Blocked Drain Reported** –On A686 by Edenhall Wood.
- **Langwathby Bridge** – Reported Footpath overgrown – Agreed to prune.
- **Trees, Langwathby Green Corner Opposite Bus Shelter** – Trunk bases to be pruned to improve road crossing visibility.
- **Cemetery** – Bushes require pruning.
- **Salkeld Road –Slit drain, opposite school** - still blocked, to report again to Highways.
- **Eden Straights Seat** – Tree pruning approved to open up view of river.
- **Planning Matters** – There were none.

Date of Next meeting Thursday 21st November.2024

John Fleming – Parish Clerk.

Melmerby Village Hall Lottery



September

- 1st £20 G Nicholson
- 2nd £10 A Devine
- 3rd £5 C Hawkins
- 4th £5 James family
- 5th £5 A Philips

October

- 1st £20 Jenkins family
- 2nd £10 Brownlee family
- 3rd £5 D Monteith
- 4th £5 Ashby family
- 5th £5 M & K Green

THE NEXT “MEMO” MAY WELL BE THE LAST

It is with great regret that we have to tell you that the future of The MEMO is extremely precarious and the next edition may be the last.

For most of the last 10 years, the roles of Editor, Chair and Community Adverts coordinator have been filled by one person who now needs to stand down. We can possibly manage without a Chair for the meantime but two roles are absolutely essential...

WITHOUT THESE, THE MEMO CANNOT CONTINUE AFTER THE DECEMBER 2024 ISSUE, SO WE DESPERATELY NEED:

AN EDITOR, WHO OVERSEES EVERYTHING AND ENSURES THAT THE VOLUNTEERS HAVE THE ARTICLES TO TYPE AND THE MAGAZINES TO DISTRIBUTE.

A COMMUNITY ADVERTS CO-ORDINATOR WHO ADVISES PEOPLE WHO HAVE EVENTS COMING UP AND COLLECTS ADVERTS AND PAYMENT FROM THEM.

We have tried for some time to find volunteers to fill these roles, but without success.

Our finances are secure, and we have a fantastic team of over 40 artists, distributors, proof-readers, and typists – all volunteers who care about our community.

But none of this can exist without 8 key people who oversee essential areas: Editing, Community Adverts, Business Adverts, Finance, Typing & Proof-reading, Cover Artwork, Distribution, Chairing.

THIS IS A LAST PLEA TO SAVE THE MEMO.

Anyone who volunteers will be well supported by the Committee members. There are already effective systems in place so they will be able to keep things as they are or reshape The MEMO to reflect their own creativity. The current Committee members will discuss the details with anyone who gets in touch.

BUT WE HAVE TO MAKE THIS BIG DECISION IN NOVEMBER, SO WE NEED TO HEAR FROM SOMEONE BY 10TH NOVEMBER AT THE LATEST.

Contact Chris on T: 01768 881015
or E: chris.midedenmemo@gmail.com

Langwathby & Edenhall WI



*We meet on the 1st Wednesday of the month
in Langwathby Village Hall at 7.30pm*

theWI
INSPIRING WOMEN

November 6th
CHRISTMAS COOKING WITH
HELEN'S HERBS

Competition: 3 savoury biscuits
Hostesses: S. Grave, M Powley

Skirwith Village Hall



Tuesday November 12 & December 10, 1200-1.30,
definitely the time of year to indulge in our soup and
cake lunches! Come and join us the second Tuesday
of every month. Dogs welcome!



Sunday 24 November 5pm Film night. Doors open 4.30 pm
Tickets £5 from Helen 01768 879024 or
team@skirwithvillagehall.co.uk **Chinatown** (1974) starring
Jack Nicholson and Faye Dunaway. A neo-noir mystery film.
Followed by a pre-ordered delicious optional supper.
Contact Janet, moveablefeasts@btconnect.com.
Book meal by 18 November.



Friday 29 November 7.30 pm. **Highlights Rural Touring presents**
Maddie Morris, BBC2 Young Folk Music Award Winner 2019. Maddie
Morris is an artist who strives to make a difference in the world. Bold,
insightful and refreshingly unique, she takes traditional song in new
directions to shine a light on contemporary issues, offering new
perspectives about the world we live in today.

TICKETS £12 Tel 01768 879024 or book online www.highlightsnorth.co.uk

Sunday 15 December 5pm Film night. Doors 4.30 pm Tickets £5 from
Helen 01768 879024 or team@skirwithvillagehall.co.uk. **The Grand**
Budapest Hotel starring Ralph Fiennes. Unique, rather zany comedy
drama - recounts the adventures of a colourful concierge in a 1930s
eastern European ski resort hotel and involves the theft and recovery of a
priceless renaissance painting

Optional after film supper, book directly with Janet at
moveablefeasts@btconnect.com by 9 December.

THE Bookshop BAND

Melmerby Village Hall, Saturday 16th November 7.30pm

Highlights Rural Touring present the internationally acclaimed and award-winning group The Bookshop Band who perform a unique concert of songs inspired by books.

Fresh out of the studio with Pete Townsend the band will transport you to a world of stories you will want to read after the show.

"A great discovery and inspiration." Pete Townsend

Adults £12, Children £8 (under 18) Ring 01768 881839

Delicious food available with bar from 6pm. Order food separately from moveablefeasts@btconnect.com

Melmerby and District Gardening Club *Dahlias for the garden and show bench*

With Andrew Robinson

Tuesday 19th November 2024, 7.30 p.m. Melmerby Village Hall

Raffle Tea/Coffee Library

Tuesday 3rd December 2024, 12.00

Christmas Meal at The Old Village Bakery, Melmerby

Please contact Jennifer Baker (Treasurer)

tonybakerdevelopments@gmail.com or 079234 30932 to book for the meal.

Any other queries contact Lorna Egan (Secretary) l.m.egan@btinternet.com or 07742 444580

M&DGC Annual membership £18 per person, visitors are very welcome to attend for £5.00

theWI
INSPIRING WOMEN

LANGWATHBY & EDENHALL **WI QUIZ NIGHT**

in Langwathby Village Hall
on Friday 15th November
at 7.00pm



Steak Pie & Pea Supper
(bring your own drinks)
Ticket £7 per person Child £5
maximum 6 per team

from P. Jago 0176888790, 07950042605.
jagopamela2@gmail.com

Culgaith Village Hall (aka The Victoria Institute)

Work has completed on new insulation, windows and heaters so social events are ramping up in our lovely warm hall.

For contact details for any of the events please drop us an email at culgaithhallbookings@gmail.com or telephone Helen 07810414833.

Upcoming events

Saturday 9th November, 7.30pm - 9.30pm - Wine Tasting.

Return of this successful fixture with Roger and Jon.
£10 / person. Please let us know if attending.



Wednesday 13th November, 7pm - 8.30pm - Village Hall AGM. If you are interested in getting involved, maybe even sitting on the committee, then please email us in advance.

BINGO!

Friday 15th November, 6pm - Family BINGO. Children £2.50, Adults £5. Pay on the door, no need to book unless wishing to reserve a large table. BYO snacks and drinks. ALL welcome, and any donation of prizes gratefully received.

Saturday 23rd November, 10am - 12pm - Bring and Buy in aid of Eden Animal Rescue. An opportunity to clear your cupboards and maybe buy some items you can cunningly upcycle to give to your loved ones at Christmas.

Saturday 4th January, 4pm - 5pm - Menopause Myths. A free talk to both women and men to understand how menopause symptoms affect us all at some point in our lives and the options available to you, such as healthy habits and more. Feel free to stay on for the exercise class afterwards.

Saturday 18th January, 7pm - 10pm - New Year Ceilidh. A fun, sociable evening of dancing. £12 for adults, £8 for under 16s. Places are limited so reserve your place now, with no need to pay until the day.

CULGAITH VILLAGE HALL 100 CLUB

September village hall 100 Club winners.

1st £50 Glynne Ward (45)

2nd £20 Angela Oliver (47)

3rd £10 Geraldine Gaizeley (74)





EDEN ANIMAL RESCUE 'POP UP SHOP'

**LANGWATHBY VILLAGE HALL
SATURDAY NOVEMBER 16TH
10.30am - 3pm**

Selling Quality Brand New and Pre-Loved Pet Equipment
and Toys

Other stalls include crafts, gifts, cards, books, bric-a-brac, cakes
and home produce

Tombola Children's Lucky Dip

Tickets for Our Grand Raffle will be on sale

Light Refreshments Available



All proceeds to our New Kennels Project.



On-goings of the Clergy recorded by Nicholson and Burn 1777

Kirkland is an ancient parish comprising four manors, namely, Kirkland itself (small 14 houses, not all in the village), Blencarn, Skirwith, and Culgaith. Until the 15th Century it was independent, but in Henry VI's reign it became part of Carlisle Priory's property (now the Cathedral) and the Cathedral's Dean and Chaplain still have rights there. In 1777 the whole parish, in its four villages, had about 145 families, all C of E. The first Rector of Kirkland on record was Adam of Newcastle, 1294. In his day, Kirkland paid Carlisle Priory 20s 0d a year, a large sum in those days. It went to the income of the Prior and his monks. In 1372 a Papal official demanded a share of the Rector's income. The Rector refused, saying this was news to him. The next Rector was no sooner installed than given leave of absence for 7 years. Kirkland's first graduate priest was Edward Slegg, B.D., 1631. Thereafter, Kirkland's Vicars were mostly graduates. They included Hugh Todd, M.A. (Later D.D.), 1654-55, who was the righteous Vicar of Penrith who got St Andrew's rebuilt in 1720-1722. From 1703-1717 the Vicar was George Flemming, M.A., later the Rt Rev. Sir George Flemming of Rydal Bard; he later became Bishop of Carlisle as well as Squire of Rydal etc.

Jeremy Godwin

*Penrith, 1 October 2024 aged 81. This months input is my 50th year of it completed.
(I began in November 1974) Bad eyesight now prevents use of microfiche.*

**THE VIC
CULGAITH'S FRIENDLY COMMUNITY CAFE
EVERYONE WELCOME!**

Every Thursday 2 .00pm – 4.00pm
at the Victoria Institute, Culgaith.

Delicious homemade cakes plus Farrers tea and coffee.

Join us on November 14th for our AGM which follows the afternoon social gathering. This is your opportunity to give your views on the running of the VIC and ideas for future activities would be welcomed.



**'Langwathby Primary
School is the best'**

The amazing Langwathby school!
Langwathby School is the best
because there is a big hall
where we eat lunch it is
yummy do you have a child that
you are looking up a school
for them? Because I think you
should choose Langwathby it is
the best! I like playtime because
you can run round like crazy!
I also like literacy because I
like writing. please, please, please come.

by Tilly, year 2

Langwathby school is the
best and PE is so good
the play ground is so
big and relaxing. do you
like school? school is so
PLAYFUL. the lunch is
so YUMMY in my tummy.
It is SUNNY and
PERFECT. the reading
corner is so FLUFFY.
I promise you will.
LeVeit!

by Nicole, year 2

The year 2 students have been learning how to write persuasive text explaining why they think this. We thought you'd enjoy these two excellent examples from Tilly and Nicole.

QUIZ NIGHT

@ The Shepherds Inn, Langwathby



Sunday 10th November

7.00-9.00

Then the 2nd Sunday of each month thereafter



FREE DRINKS FOR THE WINNERS

Just £2 pp, max team of 6, all money going towards funds for the new playground.

Please book if you want to eat before

“MEETING POINT”

*Come for coffee! - served from 10.15am
Thursday 7th November*

“OASIS”

*Come for coffee, a short reflection and light lunch
Thursday 21st November, from 10.30am*



Venue: Langwathby Methodist Chapel

Everyone welcome!



GAMBLESBY COMMUNITY CENTRE

FILM NIGHT SEASON CONTINUES ON 29th NOVEMBER WITH..

The Holdovers

PAUL GIAMATTI



THE HOLDOVERS

A festive comedy full of discomfort and joy

Film begins at 8pm, food served from 7pm.

Film only: £7. Film and 2 course meal: £15.

Vegetarian option available (please request when ordering).

Pay bar, cash only. Please order food *before 27th November.*

To book email gamblesbycommunitycentre@outlook.com
or text Julie on 07740595488 or Sean on 07843501841

LANGWATHBY COMMUNITY FELLOWSHIP



Wednesday 20th November 2.00pm at Langwathby Chapel

Craft afternoon with Lorna Egan

Refreshments will follow – please come along
Everyone is welcome!

GAMBLESBY METHODIST CHAPEL

HE BREWS COFFEE CLUB

EVERY TUESDAY 10am to 12pm +

Enjoy games, crafts or just a chat only £2

Soup and a roll from November only £2.50



LITTLE ACORNS 10th ANNIVERSARY CELEBRATION



Our Creative Children's Christian Club is 10 years old – we invite all present and past members to attend a bring and share lunch from **12 noon on SUNDAY 3 NOVEMBER** when we can share memories, play games and plan for the future.

COMMUNITY REMEMBRANCE SERVICE

Sunday 10 November 2024 at 2pm

Led by Mrs Jan Blackshaw including bugler

Our illuminated display of poppies will adorn the chapel



DATES FOR YOUR DIARY

Little Acorns Christmas coffee and stalls fund raiser

SATURDAY 7 DECEMBER 2024

from 10am to 1pm

COMMUNITY CAROL SERVICE SUN 22 DECEMBER at 4pm

More details next month

Kirkland and Blencarn Village Hall

Whist Drives - Wednesdays 6th & 20th November

7pm start

All levels welcome. Cuppa and prizes £3



Christmas Craft Fair! Saturday 16th November

10.30am - 12.30pm

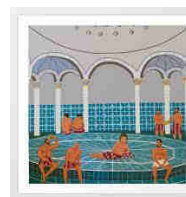
Coffee and cake and a bit of early Christmas shopping at our Artimakers' craft stalls!! Cash only please.

"Carlisle's Turkish Baths" - Friday 22nd November 7.30pm

Come along to a fascinating talk from the friends of Carlisle Baths. Discover the history of the Victorian and Turkish baths and take a glimpse of bathing history from Roman times onwards. .

Tickets £7 - includes a choice of winter puddings. Please bring your own drinks. Booking essential -

blencarnandkirklandvillagehall@gmail.com



October 50/50 Club winners

1st Sally Firth 2nd Sian Bach 3rd Linda High
4th Gillian Hinkley 5th Emma Fleming

LANGWATHBY VILLAGE HALL EVENTS

Come and join our next community events at Langwathby Village Hall:

Saturday November 9th doors from 7.00 pm

Enjoy two great live musical acts, courtesy of EVTN. £8.00 on the door, refreshments available.

Saturday, November 23rd—80s Disco - Cancelled.

Saturday 25th January 2025—Burns Night Supper with piper and traditional 3 course meal by Moveable Feasts, plus bar and musical entertainment, £25.00 pp

For more information or to make a reservation, please contact villagehall.langwathby@gmail.com

CHRISTMAS SHOPPING NIGHT

LANGWATHBY VILLAGE HALL

Friday 8th November 7.00pm-9.00pm

£3 entry (including arrival drink & mince pie)

Stalls, Bar & Raffle

In aid of Hunsonby Pool and Community Centre



PUBS, SHOPS & RESTAURANTS

The Shepherds inn, Melmerby
Opening times January - April

Mon & Tues—CLOSED

Wed: Takeaway Only 5pm-7pm |

Thurs: 6pm-10pm | Fri & Sat: 5.30-11pm

Sun: Noon-9pm

We will still be doing our Shepherds at Home **takeaway menu** during our opening hours as well as Wednesdays 5pm-7pm

Fish on Fridays! Creative and delicious weekly specials

Traditional Sunday lunch served all day

Tel: 01768 889064

Village Green, Melmerby, CA10 1HF

Facebook: The Shepherds Inn

Website: shepherdsinn.pub



LANGWATHBY STORES & POST OFFICE

Shop & Post Office

Opening Times:

Monday to Saturday 7am to 7pm

Sunday 8am to 6pm

For those everyday essentials and an excellent selection of wines (including fine wines), spirits, beers, lagers!

Plus hot & cold drinks!

Also remember to check out our regular special offers in store.

Orders taken for Delivery or Collection

Telephone:

01768 881342

EDENHALL COUNTRY

HOTEL

Fish & Chip Friday
Bar meals served daily

12pm-2pm & 6pm-9pm

Fish, Homemade Chips & Mushy Peas for only
£13.95

Sumptuous Sunday Lunch from £15.95

Lunchtime meals served 12pm to 2pm

Friday, Saturday & Sunday.

Evening meals served every evening from

5:30pm—9:00pm

Edenhall Country Hotel, Edenhall, Penrith,

CA11 8SX T:01768 881454

www.edenhallhotel.co.uk



Nisa
Making a Difference Locally





The Shepherds Inn

On The Village Green, Langwathby, Cumbria CA10 1LW
Tel 01768 881463

reservations@shepherds-inn.co.uk

Serving homemade food everyday from 12noon

Including our famous Whathby Whale and shortcrust steak and ale proper pie.

And we have been told the best shortbread in the WORLD.



Menu



Festive Menu

COMMUNITY ACTIVITIES

VILLAGE HALLS

Langwathby Village Hall bookings - please contact Brenda Shannon on 07871 994988 (please leave a message, and we'll get back to you) or by email bookings.vhlangwathby@gmail.com.

LOCAL PLAYGROUPS

A friendly, welcoming playgroup, open to everyone from local and surrounding areas during term time, offers a variety of toys, craft sessions, outings, snacks and story/song time suitable for 0-4 years.

Culgaith - 'Come and Play' at Culgaith School, 2pm-3pm

Weds 11th Sept, Fri 27th Sept – Sponsored Walk, Weds 9th Oct, Fri 25th Oct
Contact admin@culgaith.cumbria.sch.uk or 01768 88655

BUSINESS AND LOCAL SERVICES

ANDREW BRISCOE CARPET & UPHOLSTERY CLEANING

30 Years experience in the carpet cleaning industry.

Van mounted carpet cleaning system for all types of carpets.

Upholstery cleaning including Viscose, Linen and fine fabrics.

Rug cleaning drop off or pick up service.

National Carpet Cleaners Association Corporate Member.

Office Tel: 01768 865812 Mobile:07850 805251

Acrestone Cottage, Winskill CA10 1PD

BORDER WATER TECHNOLOGIES LTD:

We undertake all aspects of drainage, groundworks, erosion control, wetland/pond creation, CCTV surveys of drains; also design, installation, maintenance of sewage treatment systems & tank surveys for house sale. Contact 01768 881612. Email:admin@borderwatertechnologies.co.uk or www.borderwatertechnologies.co.uk

BUSINESS AND LOCAL SERVICES (continued)



Castle View
CONSTRUCTION

Tel: 01768 881413. Mobile: 07510 416851
Email: mc.castleview@hotmail.com
www.castleviewconstruction.co.uk

New Builds - Extensions - Renovations

All aspects of joinery, building, plastering and tiling.
Suppliers and installers of UPVC windows, doors, conservatories, fascias and soffits.
Free estimate and guaranteed to beat any like for like. Written quotation.

Chloe's

HAIR & BEAUTY

Langwathby Hall, Langwathby, Penrith CA10 1LW
Call the Salon for Hair Appointments 01768 889380
For Beauty Call Marie on 07944 643337
Plenty of FREE PARKING.

Chloe's Hair & Beauty offers all aspects of Hair Dressing & Beauty Treatments for Women, Men and Children.

Late night appointments available Wednesdays & Thursdays.

COLIN DAWSON LTD: ELECTRICAL AND DAIRY ENGINEERS



All types of Electrical Installation and testing carried out.
Bagged animal, poultry, and wild bird seed.
A wide range of household and electrical supplies, workwear, tools and general hardware is available from our shop at High Mill, Langwathby.
Tel: 01768 889084 email: dawson@xlninternet.co.uk
www.colindawsonltd.co.uk

CULGAITH SAFE & LOCKS: 24 hour Emergency Response 07790 613320

Services provided: Emergency entry to your home, business or car/van; Lock servicing/replacement and fitting; Key cutting, home and business security advice.
Website: www.safeandlocks.com E-mail: safeandlocks@hotmail.co.uk



Eddie Potts : Decorative Painter

All aspects of Interior / Exterior paintwork undertaken.
Experienced painter of High End Bespoke fitted kitchens.
Specialist paint effects available - Murals, Marbling etc.

email: eddiepotts85@gmail.com

Mobile: 07968 642661

Instagram: [eddiepottsart](https://www.instagram.com/eddiepottsart)



EDEN VALLEY'S BESPOKE MATERNITY NANNY SERVICE AND EARLY YEARS CONSULTANT specialising in helping families with newborns and sleep routines.

Contact Lucy at edenvalleynanny@gmail.com or mobile: 07766 759590

FELLSIDE GROUNDWORKS LTD: Council approved – all types of commercial and domestic groundwork undertaken: Drives, tarmac, concreting, curbing, walling, drainage etc. Also plant hire and small tool hire at reasonable rates. Please call John on 07825 768911 or 01768 881158. Or email: fellsidegroundworks@gmail.com

BUSINESS AND LOCAL SERVICES (continued)



Covering all your electrical works for the last 25 years.
Our local, friendly, and reliable team
cover all aspects of electrical work.
Contact us today for a free, no obligation estimate.



Tel: 017684 80754 - 24 Hour Emergency Response
Email: info@fieldviewelectrical.co.uk
Web: www.fieldviewelectrical.co.uk

12 Moorside, Hunsonby, Penrith CA10 1PL

Green Stuff - Garden and Home Services

Specializing in all areas of grass care. Regular or one off grass cutting, strimming, fertilizing and moss control. Hedges and bushes cut, trimmed and pruned. Green waste can be taken away. Garden joinery and general handyman work undertaken. No jobs too small. Fully insured with free no obligation quote.

Contact Simon 07966699154. Watsonsj79@gmail.com



Yoga, Meditation & Wim Hof Method with Ian Rigg

Prioritise your own health and well being and become stronger and more resilient. The following classes and workshops are available in Langwathby and Penrith:

Budokon Yoga and Mobility classes, Mindfulness meditation and compassion based interventions,

Wim Hof Method Fundamentals Course.

Contact: Ian Rigg 07743 967222 or visit ian-rigg.com



ELECTRICAL

Domestic and Commercial Electrician

As a local electrician with over 12 years experience, I offer a friendly and professional service in all aspects of electrical work. I am fully registered and insured with the NICEIC. Free design advice and quotations offered. All works will always be of the highest standard and signed off appropriately. Why not give me a call today.

07568 729010

Marius Erasmus - Culgaith, Penrith, CA10

me.electrical@hotmail.com

M.J. ELECTRICAL Friendly and Reliable, Local Electrician based in Gamblesby. All aspects of electrical work undertaken. Free quotations available. Call Michael for all your electrical queries: 01768 881799 or 07760 444525
Email: mjenningselectrical@gmail.com



Mobile: 07811 362632 Tel: 01768 897151

Email: paulmoffet@hotmail.co.uk

**New builds, extensions and garden/
boundary walls**

Fully qualified with 25 years experience

BUSINESS AND LOCAL SERVICES (continued)



PINE TREE NURSERIES & GARDEN DESIGN SERVICES

Glassonby CA10 1DZ Tel: 07899 722530 / 07391 450735

Email: pinetreenurseries@gmail.com

Wander round our display beds and choose from a large selection of perennials, shrubs, conifers, grasses and trees.

Friendly advice always available.

Opening times: Wed - Sun 10am - 5.30pm including Bank Holidays.

www.pinetreenurseries.co.uk



PS Tree : For all your Tree and Hedge care needs.

Providing fully qualified and insured tree and hedge services.

Including pruning, reductions, planting, health assessments, felling, hedge management and cutting to shape.

All waste can be removed or chipped as required.

Previous work can be viewed by following PS Tree on Facebook.

For a free, no obligation quote, please contact Dave Willetts

Tel; 075000 49755 www.pstree.co.uk email; david.willetts2@gmail.com



ROWAN Tree Surveys

t 01768 881207 m 07517 489527

phil@rowantreesurveys.co.uk www.rowantreesurveys.co.uk

ROY HODGSON LOCAL BUILDER: All aspects of building work undertaken. No job too small. Fully qualified (C&G) with over 30 years experience.

For a free, no obligation quote please call 07721 730108 or 01768 88658

TIM METCALFE JOINER AND TILER: All types of joinery and tiling work undertaken. Fully qualified with 25 years experience. All size jobs considered. Call 01768 881827 or 07977 571237



TITHE COTTAGE FURNISHINGS

Professional, friendly service making all types of curtains, roman and roller blinds, pelmets, cushions and more. Provides measuring and quotation service, with no obligation. Wide range of fabrics, curtain poles, tracks and trimmings available. Alternatively why not recycle existing furnishings into new window dressings?

Call Catherine Atkinson on 01768889179 / 07443899659

Email: tithecottagefurnishings@talktalk.net



MEMO SHORTS

The MacMillan Cancer Support afternoon held at the VIC Café in Culgaith on September 26th raised £263.20 for this vital Charity. A big thank you to the VIC volunteers and to our generous customers for their support.

About The MEMO A team of over 40 volunteers collate, type, proof & distribute your MEMO each month to produce a community based publication. We are grateful for the support given by businesses & sponsors. You can contact us as follows:

For editorial enquiries for next issue: editor@midedenmemo.org.uk

For business advert enquiries contact our business coordinator:
Jeff 07443 453121; email: jeff.midedenmemo@gmail.com

For payment related enquiries contact our treasurer:

Martin email: treasurer@midedenmemo.org.uk

For community (non-business) advert / general enquiries contact:
Chris 01768 881015; email: chris.midedenmemo@gmail.com

**All copy for the December issue by
NOON FRIDAY 15th NOVEMBER 2024**

Items ready to be typed can be sent directly to -
midedenmemo@gmail.com

Payment should accompany the advert request .

Cheques payable to 'The MEMO'; Address on request from Chris/Jeff
Payment can also be made by **BACS/electronically using the following details:**

A/c Name: The MEMO **A/c Number:** 30875570 **Sort Code:** 20-66-97

The Committee maintain the right to edit and/or withhold material as deemed necessary.

MEMO distributors will be able to collect from Langwathby Church on Wednesday 27th November 2024

MEMO CHARGES FROM 1ST JANUARY 2024

Non-Business Adverts (Individual/Groups/Clubs/Education):

£8 per third of page entry or £80 subscription (eleven thirds for the year). Sponsorship (name on front cover) £65 minimum - this donation does not include advertising within the Memo.

Business Adverts:

Standard Business Directory Advert £9 per issue or £90 subscription (11 issues) Max. 40 words excluding title & contact details plain text.
Premium Business Directory Advert £13 per issue or £130 subscription (11 issues) Max 1/6 of a page with border, image and formatting.

MEMO COPY DATES FOR DEC 2024

The copy date for December's MEMO has been pushed back a week and is now noon on:

Friday 15th November

Distributors also note the updated collection date

CHURCH SERVICES IN OUR CHURCHES AND CHAPELS FOR NOVEMBER 2024

Sunday 3rd November All Saints / Souls

Addingham	9.30 am	Holy Communion	Fiona Jenkins
Gamblesby	12.00 pm	Little Acorns, 10 th Anniversary	Claire Slee
Culgaith	11.00 am	Morning Worship	Peter & Hazel Bowes
Langwathby, Methodist Chapel	11.00 am	Morning Worship	Lawrence Tomlinson
Langwathby, Methodist Chapel	5.00 pm	Taizé	John Doidge-Harrison

Sunday 10th November Remembrance

Gamblesby	2.00 pm	Afternoon Worship	Jan Blackshaw
Langwathby, St. Peter's / Village green	10.45 am	Remembrance	Bryan Gray

Sunday 17th November 2nd Sunday before Advent

Addingham	11.00 am	Family Worship & Baptism	Fiona Jenkins
Culgaith	9.30 am	Holy Communion by extension	Bryan Gray
Langwathby, Methodist Chapel	11.00 am	Morning Worship	Dean Lawson

Sunday 24th November Christ the King/Sunday next before Advent

Culgaith	10.30 am	Cafe Church, Village Hall	Lay Team
Gamblesby	10.00 am	Little Acorns	Claire Slee
Gamblesby	2.00 pm	Holy Communion	Dave Milner
Langwathby, St. Peter's	11.00 am	Morning Worship	John Doidge-Harrison
Ousby	9.30 am	Holy Communion by extension	Julie Barratt



Ecumenical Christian Community

